

UTILISTOR™ DISK SPACE MONITOR – (DSM)

Keep a proactive watch over disk I/O and utilisation

- *DSM watches over all the disks and volumes on your networked servers.*
- *Prevent disks from getting full and crashing applications.*
- *Monitor for unusually high disk activity.*
- *Set alerts and see them on-screen and by e-mail?*
- *One consolidated view over all server based storage.*

Stop disks unexpectedly becoming full or failing.

As the number of servers in your IT environment grows, so does the number of disk volumes you need to monitor. Disks that become full or are worked to heavily can become the cause of lost data or downtime. There are numerous reasons why your disks can become full.

- Software or database corruption
- Virus attack
- User Downloading large multimedia files
- General unnoticed data growth
- E-mail build up
- Applications creating temporary files

It is nearly impossible for an IT manager to keep a constant watch over their disks. Even general data growth can catch IT managers by surprise.

Disk Space Monitor allows an IT manager to set thresholds against every disk on their networked servers and receive alerts in advance of disk problems occurring.

Disk Space Monitor Features

With Disk Space Monitor you can implement a safety net where you set the limits. DSM monitors your disk environment and ensures that administrators have plenty of warning before problems hit.

- **Near real time volume capacity monitoring.** A constant graphical view by volume allows you to know the percentage of disk space available on your network at any one time.
- **Near real time I/O monitoring.** A constant graphical view by disk or volume allows administrators to get advance warning of when disk performance problems are going to hit.
- **Utilisation threshold Alerts.** Administrators can define a percentage utilisation threshold for every volume on the network. Whenever a threshold is reached they will be notified by e-mail. For every volume or disk a warning and critical threshold against capacity and I/O levels can be set.
- **No reboot after install.** Otium have gone to great lengths to keep the client code light and unobtrusive. Having a DSM client installed on a server should have zero impact on performance.
- **Flexible licensing.** If a new disk purchase on a server means that DSM is not providing as much use as it had been. Utilistor will let you re-deploy that DSM client to another server from within the GUI.
- **Scheduling.** To reduce network traffic, administrators can set different time intervals at which individual volumes are monitored. Non critical disks with low utilisation can be checked every few minutes or hours, whereas more critical disks can be checked every few seconds.

Requirements

Utilistor Server

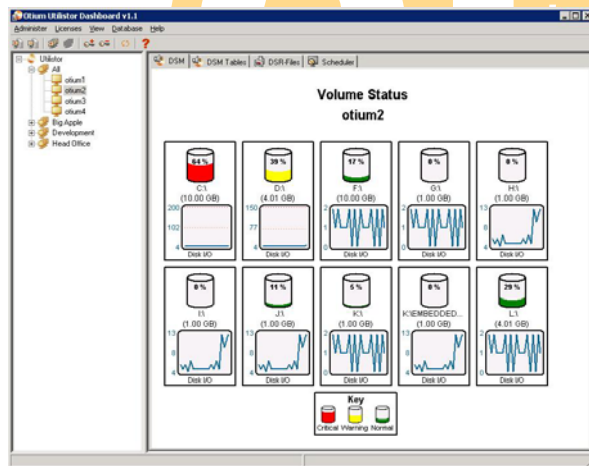
Operating System: Microsoft Windows 2000 or Windows 2003
 CPU: 1.5 GHz or higher (Recommended)
 Memory: 256Mb Minimum, 512Mb Recommended
 Disk Space: Base Product: 30Mb
 Database: Approximately 1MB per 5000 Files Scanned
 Network: TCP/IP

Utilistor Client

Operating System: Microsoft Windows NT4 (SP6a), 2000, 2003, XP
 CPU: Any
 Memory: 128Mb Minimum
 Disk Space: 20Mb
 Network: TCP/IP

Utilistor Dashboard

Operating System: Microsoft Windows NT4 (SP6a), 2000, 2003, XP
 CPU: Any
 Memory: 128Mb Minimum
 Disk Space: 10Mb
 Network: TCP/IP



For More Information visit www.otium.co.uk